



Lulu o kae?

Buka ena ke ya









Ngwana e mong le mong o tlameha hore a be a ena le dibuka tse lekgolo ha a tshwara dilemo tse hlano. Ka lebaka leo, Book Dash e kopantsha bangodi ba diprofeshenala hore ba ithaope ho ngola dibuka tsa dipale tsa Afrika tseo mang kapa mang a ka difetolelang le ho nehelana ka tsona mahala. Ho fumana tlhaisoleseding e batse, le ho jarolla dibuka tse sentseng di phethetswe, mme di loketse ho hatiswa, etela bookdash.org.

Lulu o kae?

Ditshwantshiso ka Clyde Beech

E ngotswe ke Mohale Mashigo

E radilwe ke Nkosingiphile Mazibuko

E hlophisitswe ke Lisa Treffry-Goatley

Ka thuso ya bankakarolo ba Book Dash, mane Motse Kapa ka la 14 Mmesa 2018.

E fetoletswa Sesothong ke Masabata Mokgesi, lebitsong la New Africa Books.

ISBN: 978-1-928497-18-9

This work is licensed under a Creative Commons Attribution 4.0 Licence (<http://creativecommons.org/licenses/by/4.0/>). You are free to share (copy and redistribute the material in any medium or format) and adapt (remix, transform, and build upon the material) this work for any purpose, even commercially. The licensor cannot revoke these freedoms as long as you follow the following license terms:

Attribution: You must give appropriate credit, provide a link to the license, and indicate if changes were made. You may do so in any reasonable manner, but not in any way that suggests the licensor endorses you or your use.

No additional restrictions: You may not apply legal terms or technological measures that legally restrict others from doing anything the license permits.

Notices: You do not have to comply with the license for elements of the material in the public domain or where your use is permitted by an applicable exception or limitation.

No warranties are given. The license may not give you all of the permissions necessary for your intended use. For example, other rights such as publicity, privacy, or moral rights may limit how you use the material.





Lulu o kae?



Clyde Beech Mohale Mashigo Nkosingiphile Mazibuko
E fetoletswe Sesotho ke Masabata Mokgesi





“Tjhe, bo!”







“Lulu! Ke nako ya ho tsamaya,”
ho rialo Mama.








Lulu o kae?
Ekaba o ka tlasa sofa?
Ekaba o ka mora kgaretene?







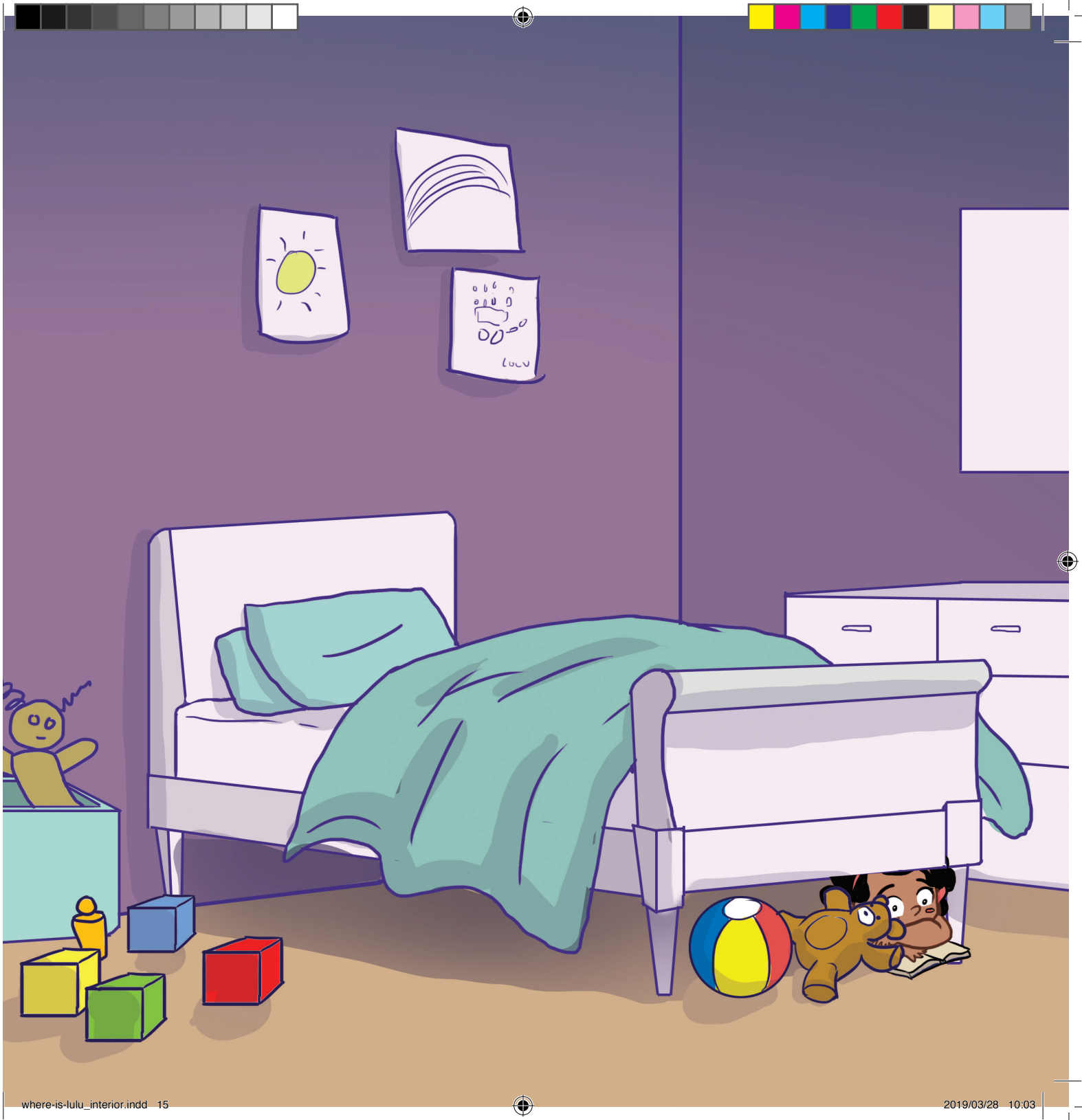
Lulu o kae?
Ekaba o pela setofo?
Ekaba o ka khaboteng?





“Lulu! Ke nako ya ho tsamaya.
O ho kae?” ho botsa Mama.







“Ka o fumana!”

“Ha ke batle ho tsamayaa!”





“Re tlameha ho tsamaya,”
ho rialo Mama.

“Empa ke rata ena **haholo!**”











“Ke rata ena haholo!”





“Le ena.”



“Le end.”

“Le end.”





“Wa bona? O tshwanela ho kgutlisa dibuka hore o kadima tse ding tse ngata.”

“EYA!”







“Lulu o kae jwale?”







