

Tshimima tsha  
Tie tsha  
Tlotlego



Nicolene Louw

Laura de Lange

Ashlyn Atkinson

# Tshimima tsha Tie tsha Tlotlego

Bugu iyi ndi ya

---







Every child should own a hundred books by the age of five. To that end, Book Dash gathers creative professionals who volunteer to create new, African storybooks that anyone can freely translate and distribute. To find out more, and to download beautiful, print-ready books, visit [bookdash.org](http://bookdash.org).

Tshimima tsha Tie tsha Tlotlego  
(Tlotlego's Tea Party)

Illustrated by Nicolene Louw

Written by Laura de Lange

Designed by Ashlyn Atkinson

Edited by Nabeela Kalla

Translated by Alugumi Rathumbu

with the help of the Book Dash participants in the Virtual Book Dash on 15 May 2021.

ISBN: 978-1-77632-456-9

This work is licensed under a Creative Commons Attribution 4.0 Licence (<http://creativecommons.org/licenses/by/4.0/>). You are free to share (copy and redistribute the material in any medium or format) and adapt (remix, transform, and build upon the material) this work for any purpose, even commercially. The licensor cannot revoke these freedoms as long as you follow the following license terms:

**Attribution:** You must give appropriate credit, provide a link to the license, and indicate if changes were made. You may do so in any reasonable manner, but not in any way that suggests the licensor endorses you or your use.

**No additional restrictions:** You may not apply legal terms or technological measures that legally restrict others from doing anything the license permits.

**Notices:** You do not have to comply with the license for elements of the material in the public domain or where your use is permitted by an applicable exception or limitation.

**No warranties are given.** The license may not give you all of the permissions necessary for your intended use. For example, other rights such as publicity, privacy, or moral rights may limit how you use the material.

# Tshimima tsha Tie tsha Tlotlego

Nicolene Louw

Laura de Lange

Ashlyn Atkinson



Tlotlego u na tshimima tsha tie tsha muṭa WOṬHE.

“Ndi vathu vhangana vhane vha khou  
ḡa u nwa tie, Gugu?”

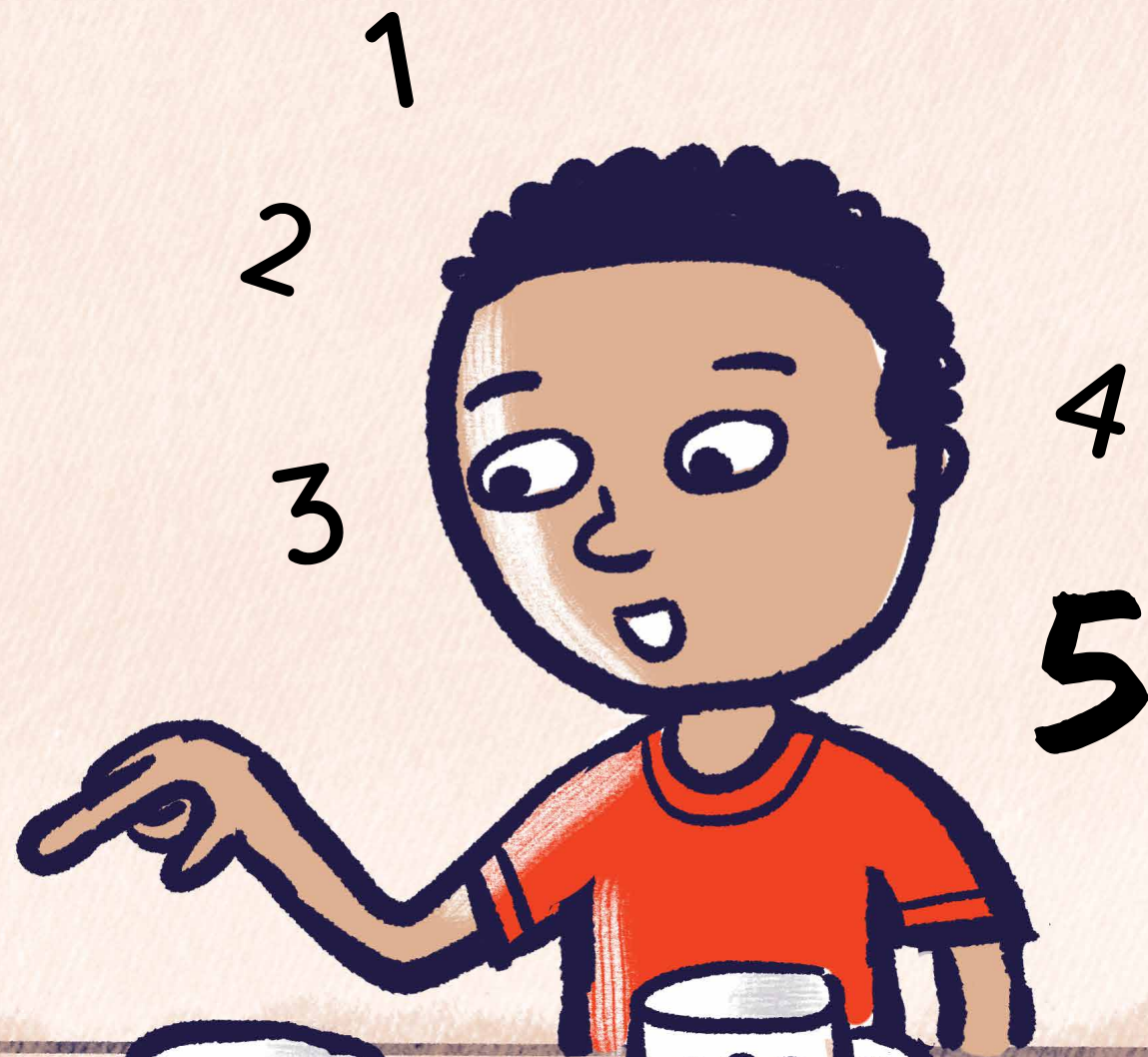
“Inwi, nḡe, Mma, na Baba.  
Na khaladzi aṅu muṭuku, Tshiamo.”



1  
2  
3  
4  
5

Tlotlego a vhalela khaphu dza tie zwenezwi a tshi  
khou dzi dzhia khishini.

“Thihi, mbili, raru, ina, na nthihi ya Gugu!”





Tlotlego a ya tshitupuni a vhea  
khaphu dza tie kha țafula.

1  
2 3  
4

“Thihi, mbili, raru, ina, na ...?”

“Ndi khou vhona khaphu n̄a fhedzi,  
hu amba Gugu, fhedzi ri vhațanu.”

“Musi ndi khishini, ho vha hu  
na khaphu țhanu!” Tlotlego a ambela  
n̄ha o mangala.





Tlotlego a vhalela phulethi ʘhukhu dza  
u naka zwenezwi a tshi khou dzi bvisa ragani.

**“Thihi, mbili, raru, iᅇa, na ʘhanu!**

Hu na phulethi ya muᅇwe na muᅇwe washu.”





Tlotlego a ya tshitupuni a vhea phulethi tsini na khaphu dza tie.

Thihi, mbili, raru, ina, na ...?"

"Ndi khou vhona phulethi nna fhedzi," hu amba Gugu,

"fhedzi ri vhatanu."



Tlotlego a vhalela makhekhe zwenezwi a tshi  
khou a bvisa ngomu ha dzhomela.

**“Thihi, mbili, raru, ina, na thanu!”**



Tlotlego a ya tshitupuni a vhea makhekhe ngomu ha phulethi.

“Thihi, mbili, raru, ina, na ...?”

“Ndi khou vhona makhekhe maṅa fhedzi,”  
hu amba Gugu,

“fhedzi ri vhaṭanu.”





Tlotlego o kanganyisea. U a zwi ḡivha uri o vha a khou vhalela zwone.

O thoma a na makhekhe maḡanu, zwa zwino u na maḡa fhedzi.

**ZWO** ḡisa hani uri makhekhe a vhe maḡuku?



**Tlotlego a vhalela khubu dza swigiri zwenezwi  
a tshi khou dzi bvisa ngomu ha dzhomela.**

“Thihi, mbili, raru, ina, na thanu!”



1 2 3  
4

**Tlotlego a ya tshitupuni a vhea khubu  
dza swigiri kha ʔafula.**

Nga hetshino tshifhinga, u na vhuʔanzi uri  
o pfa u setshelela.

“Thihi, mbili, raru, iʔa, na ...?”

“ʔhanu!” hu vhidzelela ipfi u bva fhasi ha ʔafula.



**Tlotlego a kwatama uri a sedze fhasi ha ʒafula.  
Zwo mu mangadzaho, u khou vhona sete ya tie yo  
fhelelaho fhasi ha ʒafula!**

Hu na khaphu ya tie, phulethi, khekhe na khubu ya  
swigiri zwi ʒahelaho.

Musi Mma na Baba vha tshi  
vhuya mushumoni, vhothe vha  
nwa tie tshitupuni.

Muthihi, vhavhili, vhararu vhavho vha  
khou nwa tie tafulani,

ngeno vhavhili vhavho vha tshi  
khou nwa tie nga fhasi!





