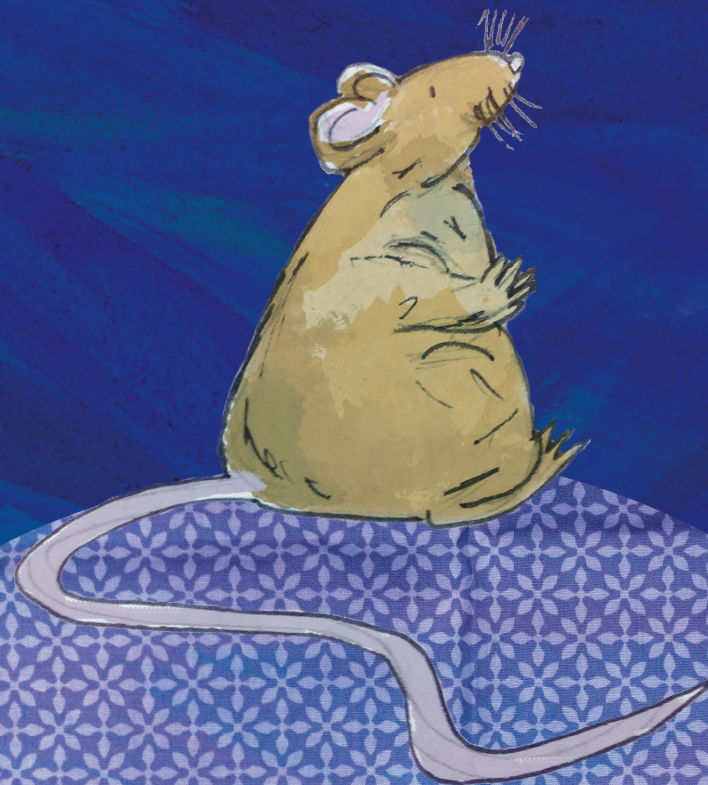


N'wakondlo a lava yindlu leyintshwa.
Swiharhi swa vunghana swa n'wi
rhurhela emakaya ya swona.

Kambe ku hava lexi xi fambaka kahle
kufikela loko a tikumela xivandlanyana xa
yena, xo kufumela na ku tshamiseka.



Yindlu ya N'wakondlo



Michele Fry, Amy Uzzell
& Jennifer Jacobs